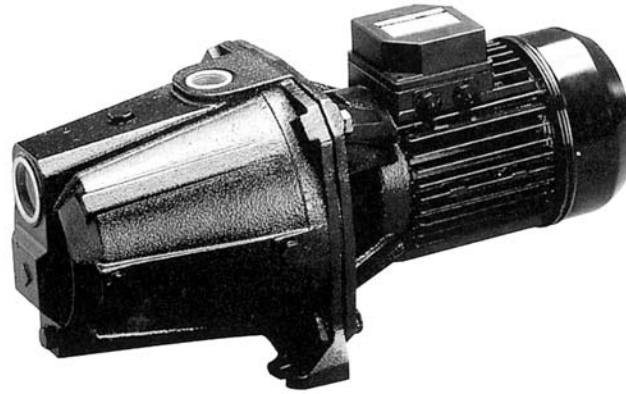


SELF PRIMING PUMPS in cast iron

Self-priming electropump made in cast iron, suitable for domestic pressure boosting, small irrigation, gardening, car wash, emptying tank and pools and pumping clear water in general.



SPECIFICATIONS

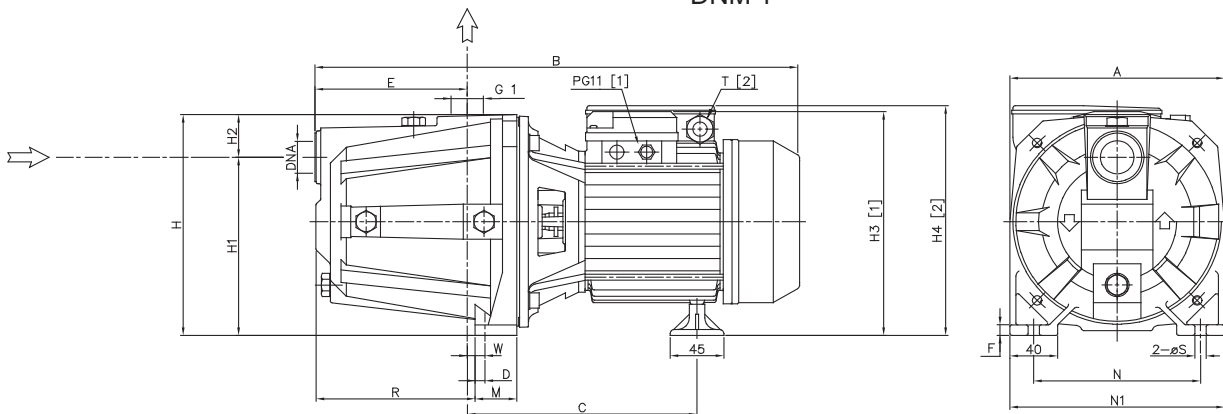
- Maximum working pressure : 6 bar for AGA 0.60-0.75-1.00
10 bar for other models
- Maximum liquid temperature : 35°C according EN 60335-2-41 for domestic uses
45°C for other uses
- Maximum suction : 8 mts

MATERIALS

- Pump body in cast iron
- Casing cover in AISI 304 for AGA 0.60-0.75-1.00
- Shaft in AISI 416 for AGA 0.60-0.75-1.00, in AISI 303 for the other models
- Impeller in technopolymer for AGA 0.60-0.75-1.00, in brass for the other models
- Mechanical seal in carbon/ceramic/NBR

TECHNICAL DATA

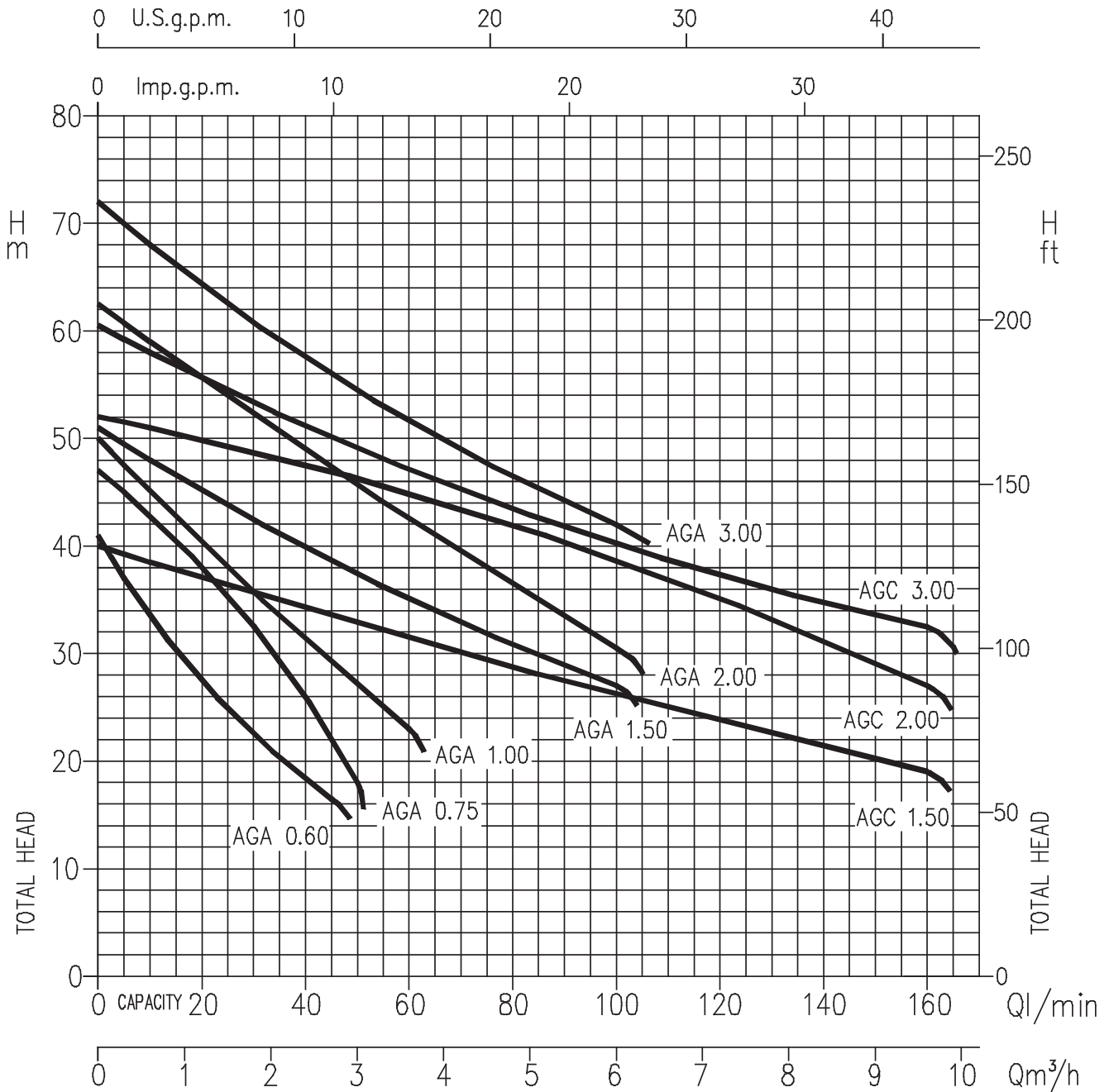
- Asynchronous 2 pole motor
- Insulation : Class F
- Protection degree : IP44
- 1~230V ± 10% 50Hz, 3~230/400V ± 10% 50Hz
- Permanent split capacitor and automatic thermal overload protection for single-phase version
- Thermal protection to be provided by the user
- DNM 1"



[1] : 3 -
[2] : 1 -

DIMENSION TABLE

Pump type		Dimensions (mm)																	Weight			
		A	B	C	D	E	F	H	H1	H2	H3	H4	M	N	N1	R	T	W	S	DNA	Kg	
Single-phase	Three-phase		1~	3~							3~	1~					1~					
AGA 0.60 M	AGA 0.60 T	180	405	405	195	10.3	127	9	185	152	33	197.5	199	40	140	180	128.5	PG11	11.8	9.5	G 1	12.5
AGA 0.75 M	AGA 0.75 T	180	405	405	195	10.3	127	9	185	152	33	197.5	199	40	140	180	128.5	PG11	11.8	9.5	G 1	13
AGA 1.00 M	AGA 1.00 T	180	405	405	195	10.3	127	9	185	152	33	197.5	199	40	140	180	128.5	PG11	11.8	9.5	G 1	14
AGA 1.50 M	AGA 1.50 T	220	495	495	244	10	157	10	223	170	53	229	247	48	180	220	167.5	PG13.5	15.5	9	G 1½	26
AGA 2.00 M	AGA 2.00 T	220	508	495	244	10	157	10	223	170	53	229	247	48	180	220	167.5	PG13.5	15.5	9	G 1½	27
-	AGA 3.00 T	220	-	508	244	10	157	10	223	170	53	229	-	48	180	220	167.5	-	15.5	9	G 1½	27
AGC 1.50 M	AGC 1.50 T	220	495	495	244	10	157	10	223	170	53	229	247	48	180	220	167.5	PG13.5	15.5	9	G 1½	26
AGC 2.00 M	AGC 2.00 T	220	508	495	244	10	157	10	223	170	53	229	247	48	180	220	167.5	PG13.5	15.5	9	G 1½	27
-	AGC 3.00 T	220	-	508	244	10	157	10	223	170	53	229	-	48	180	220	167.5	-	15.5	9	G 1½	27

PERFORMANCE CURVE

PERFORMANCE TABLE

Pump type	kW	Capacitor		Absorbed Current (A)			l/min m³/h	Q=Capacity											
		µF	Vc	Single-phase	Three-phase			5	10	20	30	45	50	60	80	100	130	160	
Single-phase 230V 50Hz	Three-phase 230/400V 50Hz			Single-phase	230V	400V		0.3	0.6	1.2	1.8	2.7	3	3.6	4.8	6	7.8	9.6	
								H=Total head											
AGA 0.60 M	AGA 0.60 T	0.44	12.5	450	3.1	2.1	1.2	37	33.4	27.1	22	16.5	-	-	-	-	-	-	
AGA 0.75 M	AGA 0.75 T	0.55	14	450	4.0	2.8	1.6	45	42.8	37.9	32	21.9	18	-	-	-	-	-	
AGA 1.00 M	AGA 1.00 T	0.75	20	450	5.5	3.6	2.1	47.5	45	40.3	35.7	29.1	27	23	-	-	-	-	
AGA 1.50 M	AGA 1.50 T	1.1	35	450	8.1	5.3	3.0	-	48	45.1	42.4	38.6	37.4	35.1	30.8	27	-	-	
AGA 2.00 M	AGA 2.00 T	1.5	40	450	9.8	6.3	3.6	-	59	55.6	52.2	47.3	45.7	42.5	36.4	30.5	-	-	
-	AGA 3.00 T	2.2	-	-	-	7.9	4.7	-	68	64.3	60.8	55.9	54.4	51.6	46.4	42	-	-	
AGC 1.50 M	AGC 1.50 T	1.1	35	450	8.6	5.8	3.3	-	38.5	37	35.6	33.5	32.7	31.4	28.7	26.1	22.4	19	
AGC 2.00 M	AGC 2.00 T	1.5	40	450	10.5	6.8	3.9	-	51	49.9	48.8	46.9	46.3	44.9	42	38.7	33.2	27	
-	AGC 3.00 T	2.2	-	-	-	7.9	4.6	-	58	55.6	53.5	50.1	49.1	47.1	43.4	40.2	35.9	32.5	